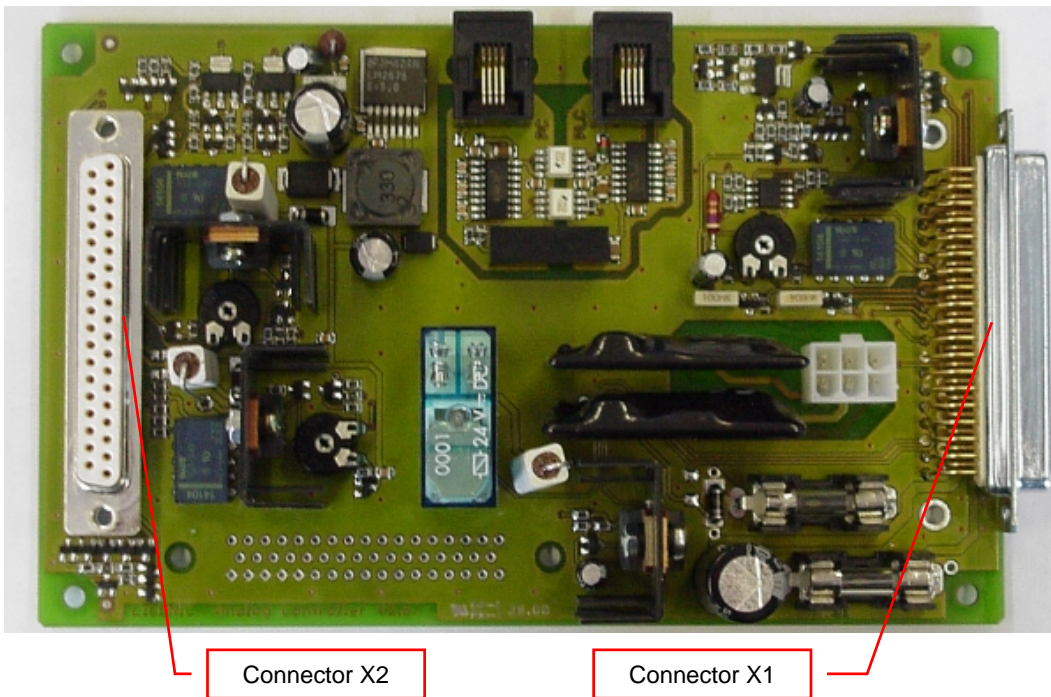


Title:	How to connect a Solenoid			ID:
				0078
Date in:	Response:	Model:	Author:	
2009-03-25	2009-03-25	-	CMa	

How to connect a Solenoid

Controller Card:



Old Wiring:

PLC 510	—○	X2.34
Solenoid M-	—○	X2.33
Solenoid M+	—○	X2.32

New Wiring:

PLC 510	—○	X1.27
Solenoid M+	—○	X1.7
Solenoid M-	—○	X1.29