

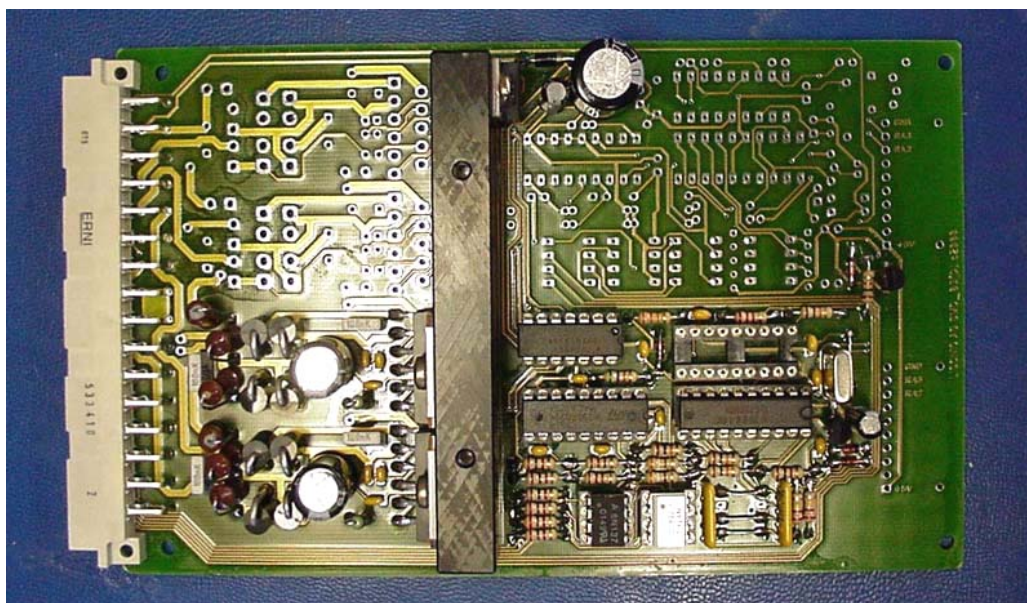
<b>Title:</b>	<b>How to Disable Carrousel</b>	<b>ID:</b>	
		0134	
<b>Date in:</b>	<b>Response:</b>	<b>Model:</b>	<b>Author:</b>
2004-11-11	2004-11-11	-	CMa

## Q:

I need a drawing to disable the ambi carousels we have here at Novartis (s/n 8111 & 8112). The information you and Wes provided will not work on these as these carousels are disabled via the stepper card and not the PLC. I am currently on site at the facility and need this info right away. Hope to here from you shortly.

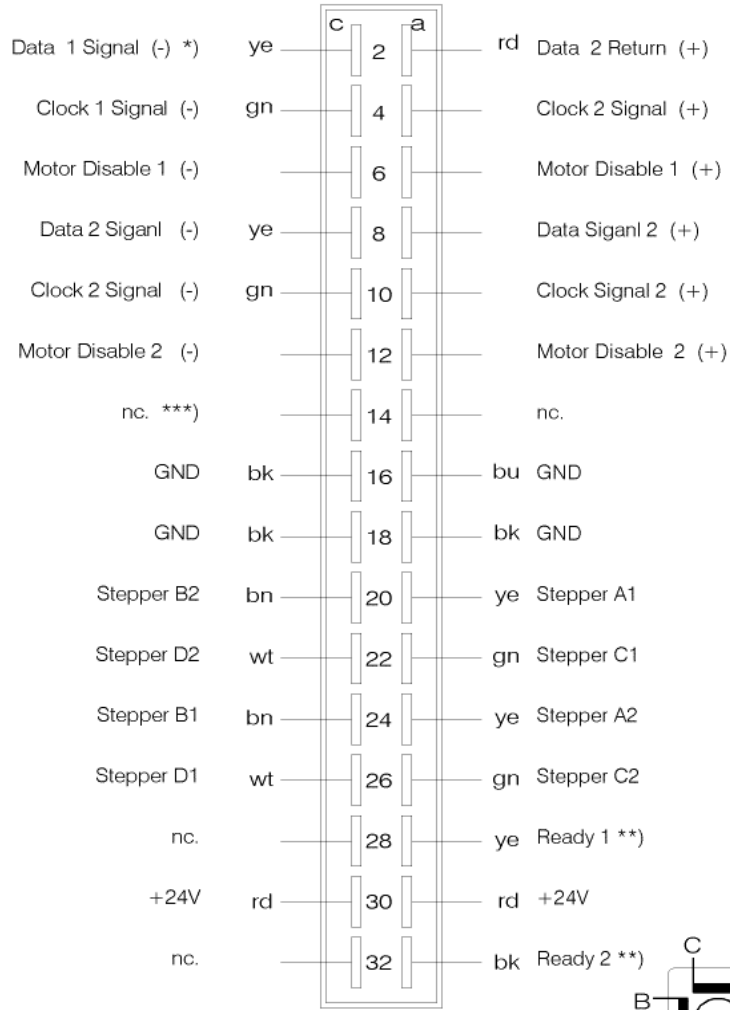
## A:

You need to ground 6c to disable the carrousel. The wire needs to be on the second SMC (half equipped) SMC Card.



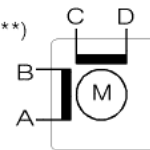


## SMC Dual Stepper Board SyncBus Mode



DIN41612 - VG95324  
female

- \*) Opto Chopper IF=10mA
- \*\*\*) Open Collector NPN
- \*\*\*) Do Not connect NC Pins



CMa\_23.11.98  
SMC\_CON1 2