

Title:	Glass Door Leaking	ID:	
		0287	
Date in:	Response:	Model:	Author:
2007-06-28	2007-06-28	STX40	CMa

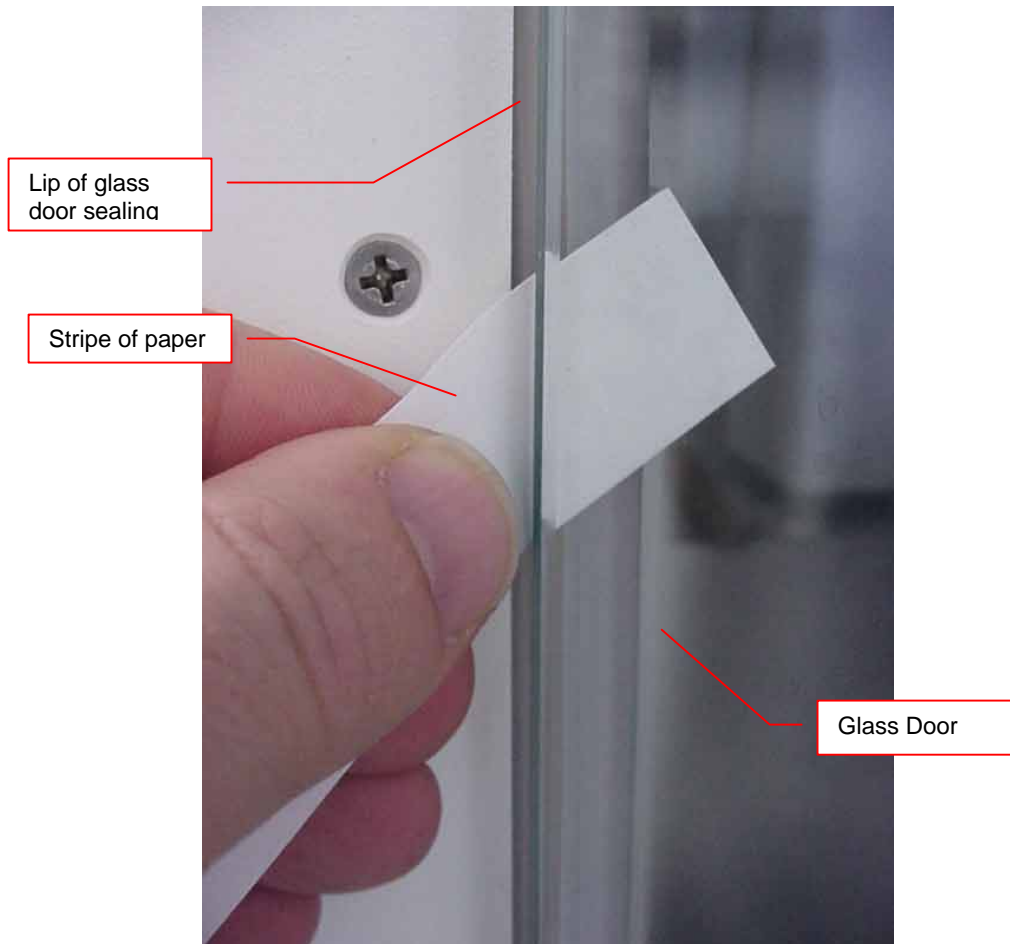
Q:

As promised here is the picture of our Storex. I do not know if you can see the water/condense on the glass door but there is still some left even though we switched it off? It is leaking from the right corner and here there is still some water left in the open door.



A:

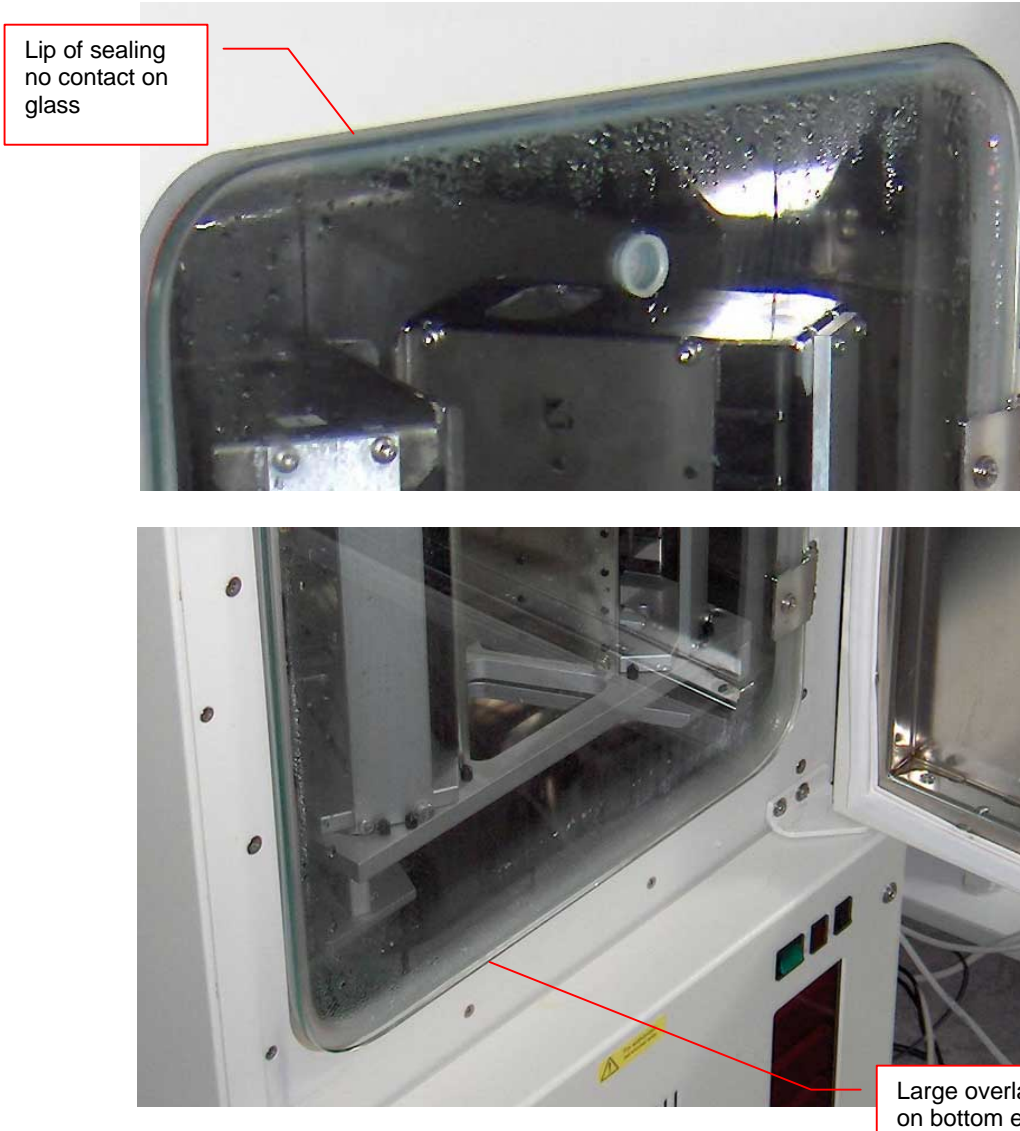
There are four correction steps that can be taken. Prior correction the seal may be checked using a stripe of paper.



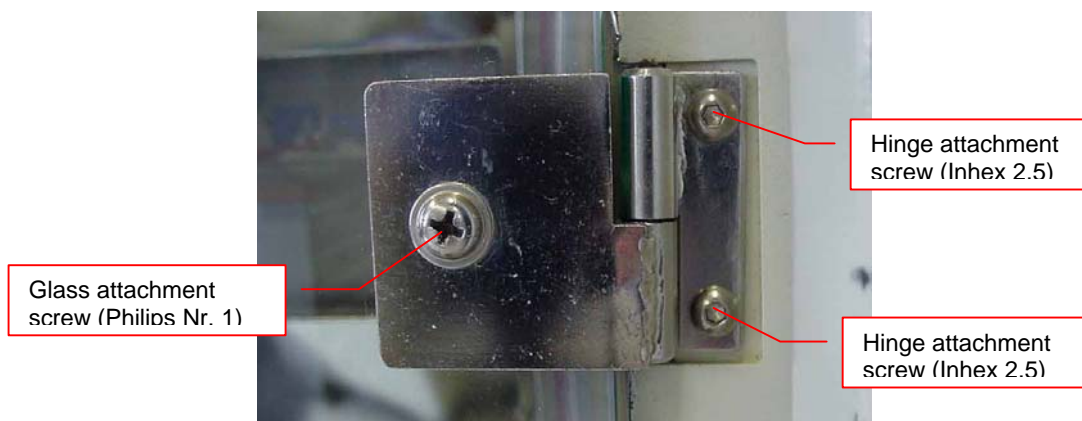
There should be slight resistance when moving paper along the seal. In case of a gap there is no more friction. It is sometimes helpful open the glass door before moving the paper to another location.

1. Correct Door Position

In case the door has slipped down (e. g. during transport) the door may be lifted back up.

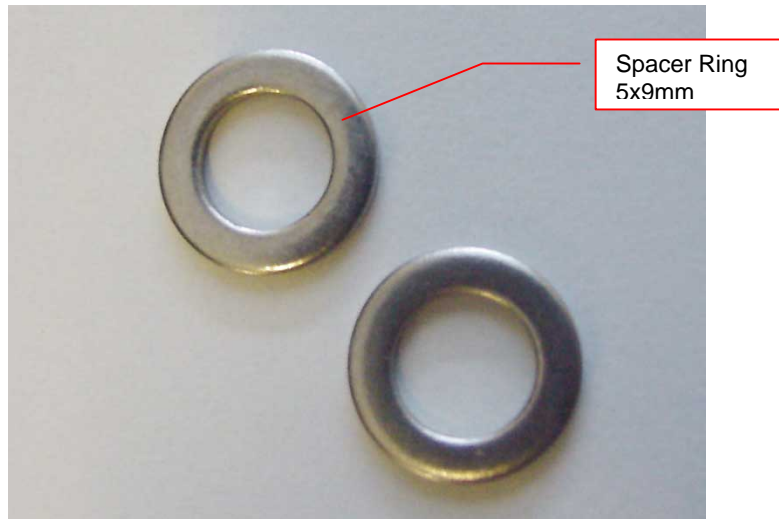


You may easily correct this by loosen the attachment screws of the hinges, lift-up the door up and re-tighten the screws again.

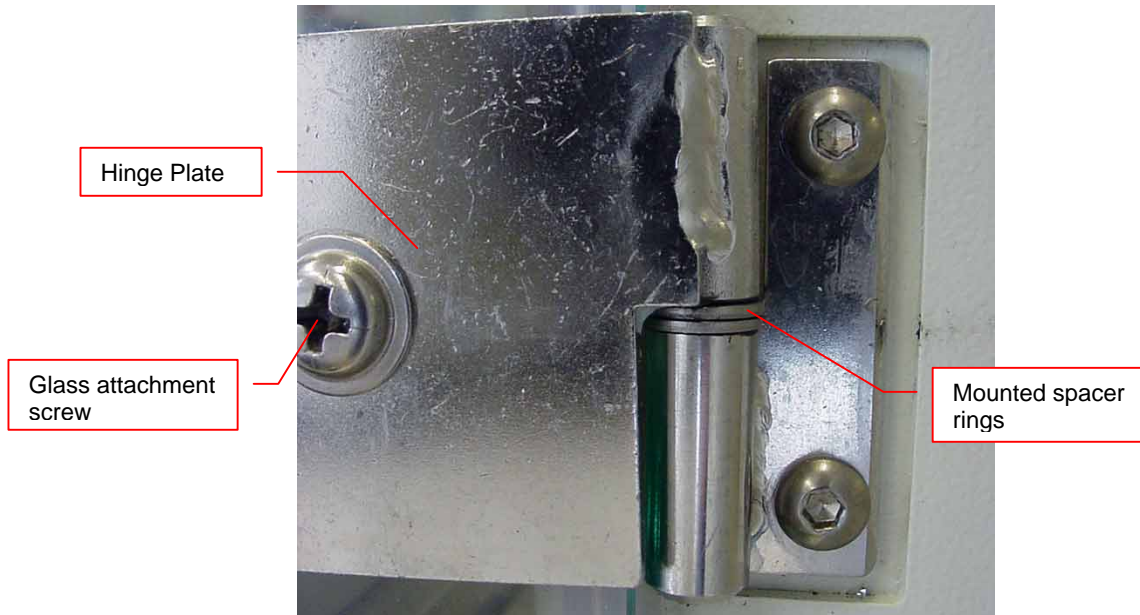


2. Lift-up Door

If there is not enough clearance there is the possibility of adding spacer rings to the lower hinge.



For adding the spacer rings, the glass door attachment screw is loosened and the hinge plate removed. The spacer rings may now be added as shown in the picture below.



3. Increase Pressure on Door Seal

The pressure of the glass door may be increased by putting a spacer under the hinge plate. The spacer will be located between the hinge plate and the glass door moving the glass door surface closer to the opening of the chamber.



4. Adjust Incubation Chamber

The curvature of the incubation chamber can be bent. This procedure requires mechanical skills and some experience.