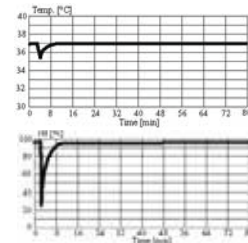


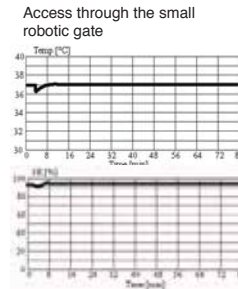
STX110

The STX110 is the world's smallest carousel based automated incubator. The STX110 slim 400 mm width minimises room required along a robotic line. Yet, keeping size constraints in mind, these units can be stacked to increase production needs.

The STX110 features LiCONiC's new Flush Gate and LiCONiC's new speed optimised handling. The Flush Gate simplifies integration by omitting any obstacle in the Gate area.



Access through full-sized user door



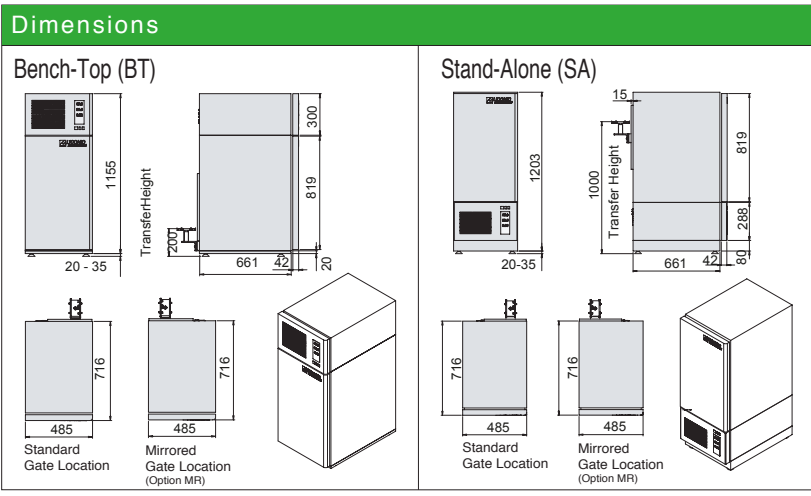
Access through the small robotic gate

Climate Options					
Type	Temperature	Humidity	Description	Order Nr. STX110 Stand Alone	Order Nr. STX110 Bench Top
STX110-IC	33..50°C (70°C)	max. 95%	Incubator	9131 00 00	9131 05 03
STX110-HC ¹⁾	04..25°C	max. 90%	Humid Cooler	9131 05 00	9131 05 04
STX110-DC2 ^{1) 3)}	04..25°C	04..50%	Dry Storage	9131 05 25	9131 05 26
STX110-HR ¹⁾	04..50°C (70°C)	90..95%	Humid Wide Range	9131 05 01	9131 05 05
STX110-DR ^{1) 3)}	04..50°C	02..50%	Dry Wide Range	9131 05 07	9131 05 08
STX110-AR ^{1) 2)}	04..50°C	10..95%	Humidity Controlled	9131 05 12	9131 05 15
STX110-DF ¹⁾	-20..0°C	02..45%	Deep Freezer	9131 05 14	9131 05 19
STX110-NC	-	-	No Climate	9131 05 28	9131 05 29

1) Humidity depends on temperature setting / 2) Humidity Adjustable / 3) Adjustable dehumidification / 4) up to +20°C on request

The STX110 instruments are available for integration with the instrument placed on the table surface (BenchTop BT) or for integration with the instrument standing on the floor (StandAlone SA). The combination of a StandAlone configuration with a BenchTop allow these units to be stacked.

Options			
	Order Nr.		Order Nr.
High temperature 70°C capability	9122 06 02	Fast CO2 Gassing Option	9118 11 12
Bar Code Reader Option	9118 11 03	Fast N2 Gassing Option	9118 11 13
Plate Presence Sensor	9121 00 62	Fast O2 Gassing Option	9118 11 14
Disposal Tips upgrade kit up to 100mm height	9118 12 23	Additional CO2 Gassing Option	9118 11 07
Fast access for time critical applications	9111 10 00	Additional N2 Gassing Option	9118 11 11
N-Way Decontamination	9122 05 28	Additional O2 Gassing Option	9118 11 08
Liconel self decontaminating incubator chamber	9131 05 11		
Linear Shaker, Amplitude 1-100mm, 12-300 rpm	9131 00 18		
UCI Universal Communication Interface	9118 11 17		
Steam Injection	9118 11 16		
Side Gate (left side wall, seen from front)	9131 05 20		
Mirrored Gate Location, on back wall (MR)	9131 05 30		



Available from July 2018

Capacity		
Plate Type	Plate Height	Plate capacity of unit
NTP (Nanotiter Plates)	5 mm	210
	11 mm	140
	1536	135
MTP (Microtiter Plates)	17 mm	110
	22 mm	85
	23 mm	85
	24 mm	85
DWP (Deep Well Plates)	27 mm	75
	44 mm	50
	53 mm	40
DiTi200	66 mm	35
DiTi1000	104 mm	20



www.Liconic.com
 Europe & International: Liconic AG, Liechtenstein
 UK & Nordic: Liconic UK Ltd, Manchester
 US & Asia: Liconic Inc, Woburn MA
 22.05.2014
 © Liconic AG