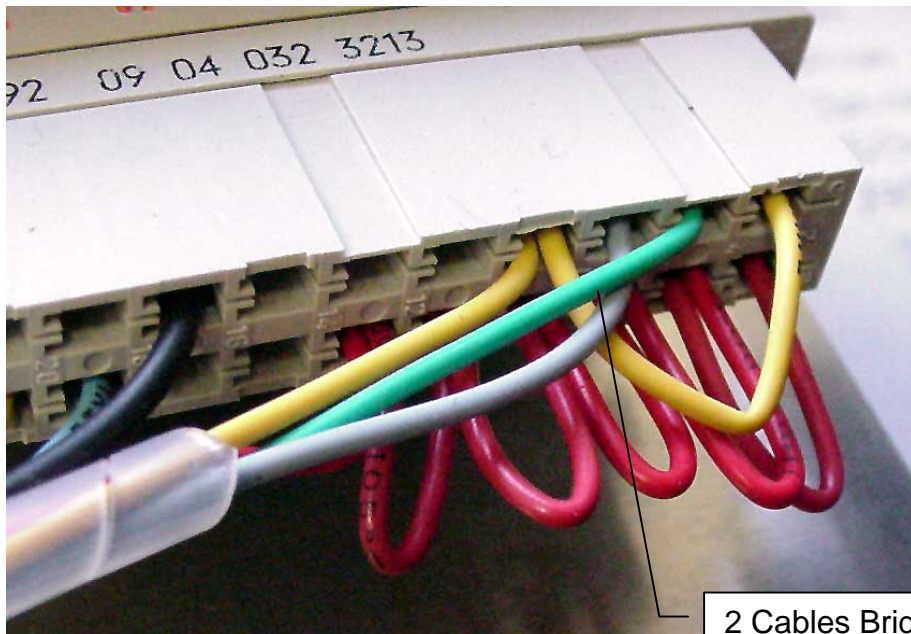


| | | | | |
|------------|---|--------|---------|------|
| Title: | Service Note Connector Motor Cards | | | ID: |
| | | | | 0014 |
| Date in: | Response: | Model: | Author: | |
| 2005-12-03 | 2005-12-03 | - | CMa | |

Service Note

Connector Motor Card



Crimp Contact were taken that are not suitable for two cables.

The metal core of one of the two cables may be broken.

Suitable pins were purchased. Contact pins on all modules on stock will be replaced.