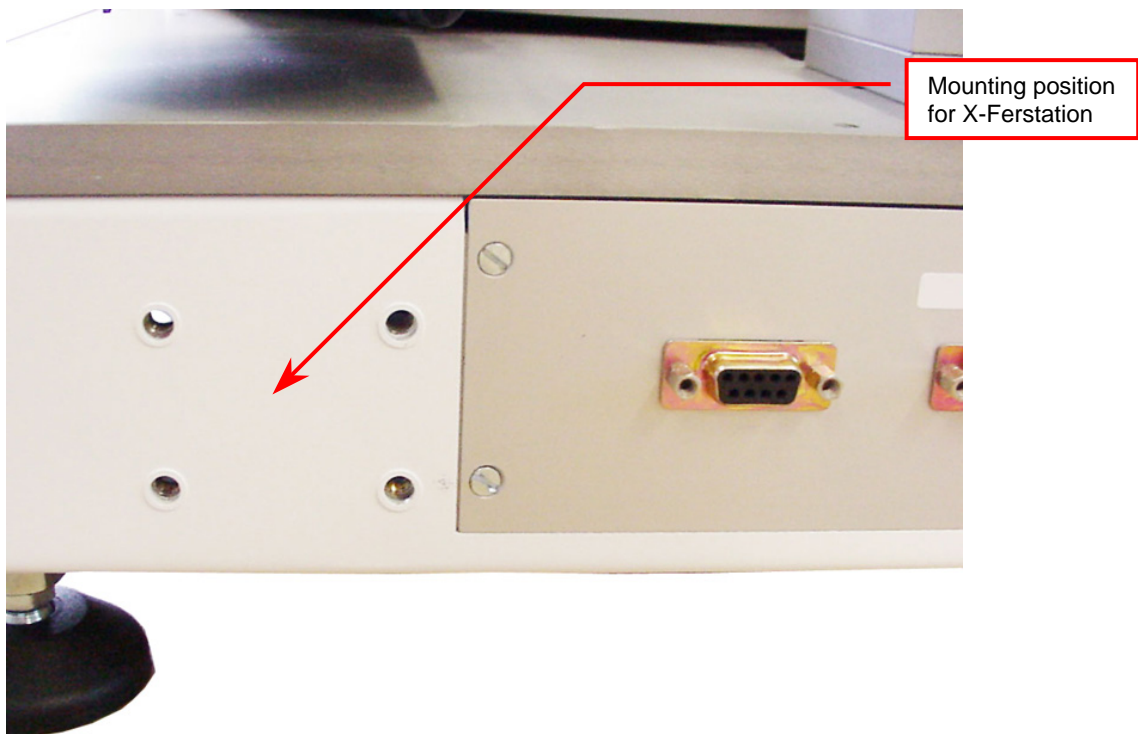


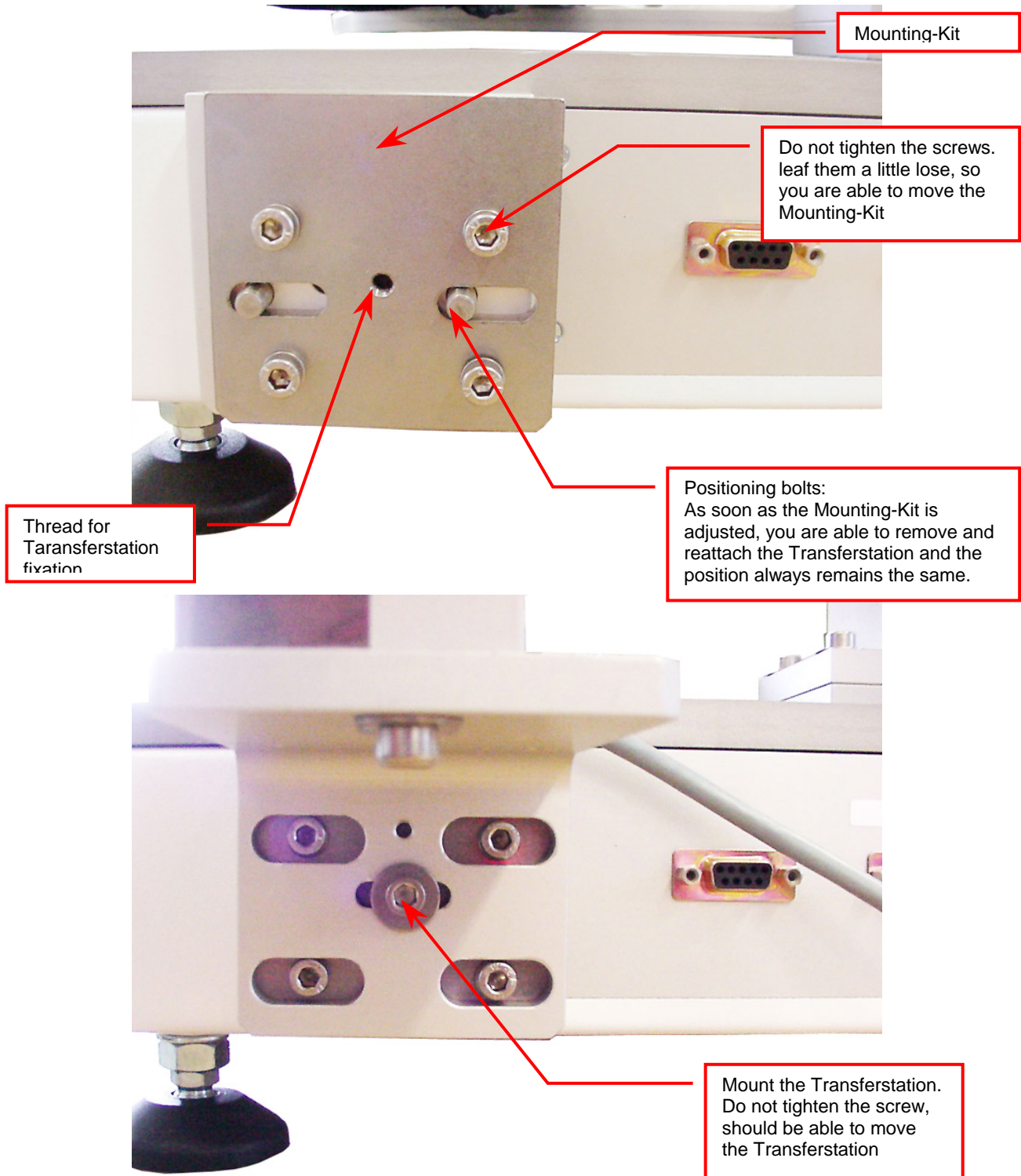
Title:	Install X-Fer most units			ID:
				0035
Date in:	Response:	Model:	Author:	
2007-07-19	2007-07-19	-	C <i>Ma</i>	

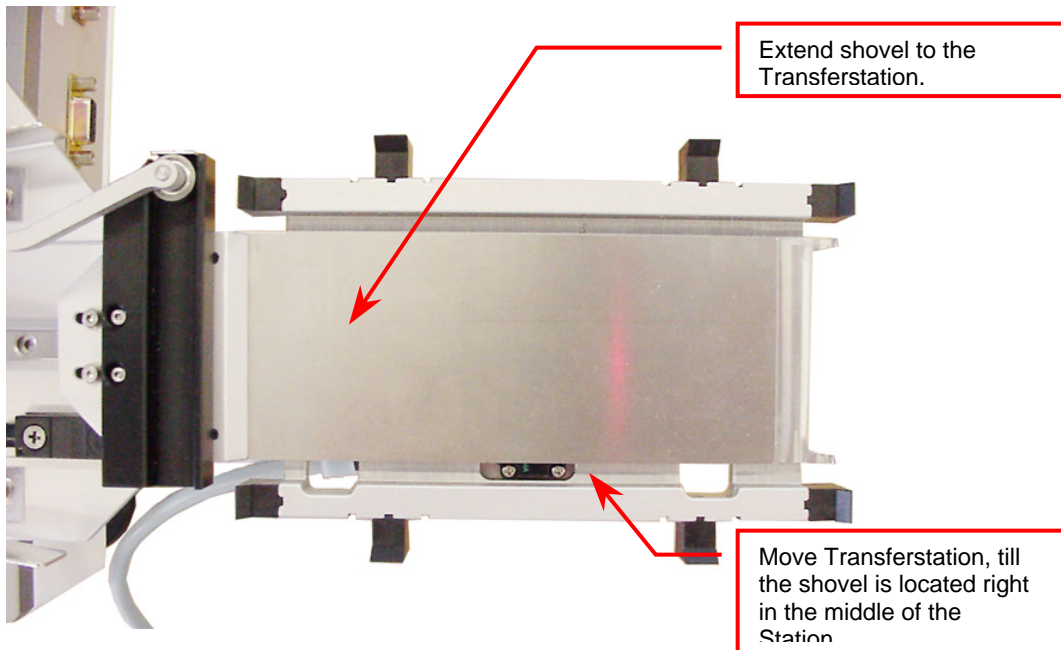
## How to mount a X-Fer Station

Applicable for all Liconic Units  
**except: STR-Series and STX40**

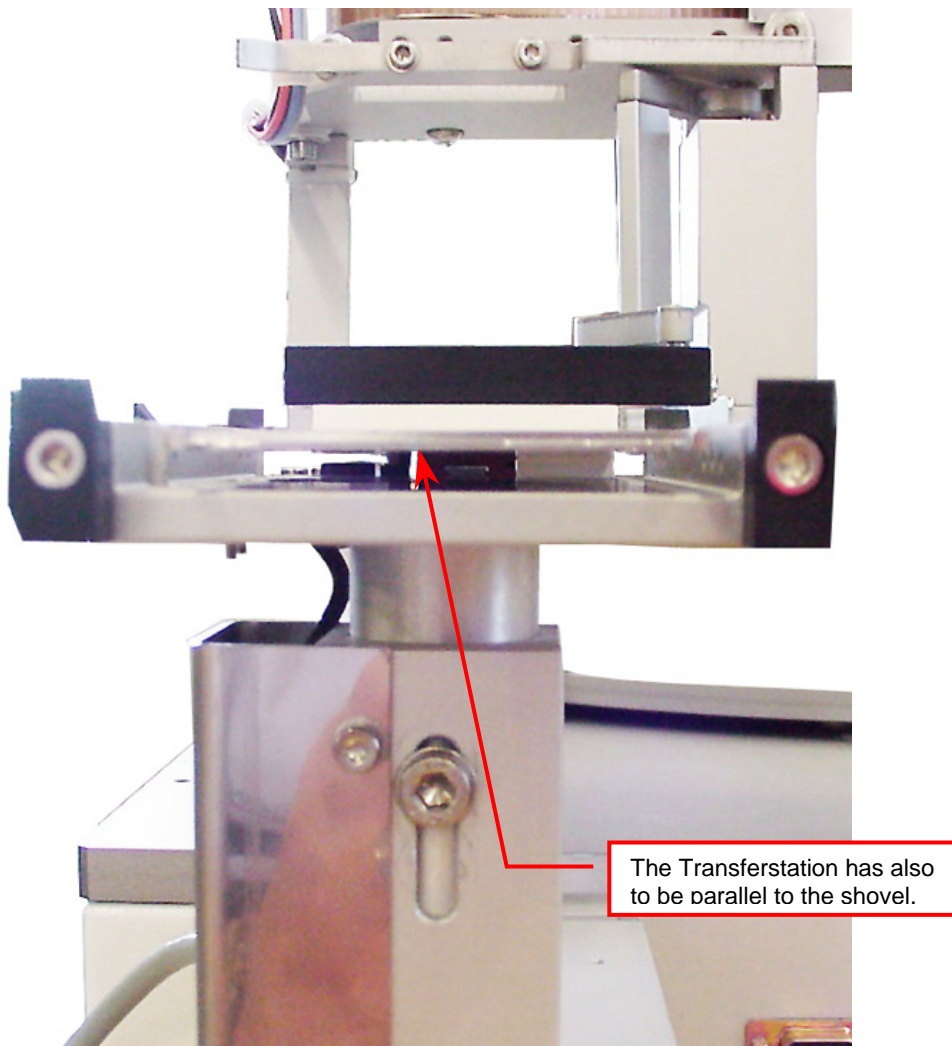
### 1. Mounting Kit not yet attached

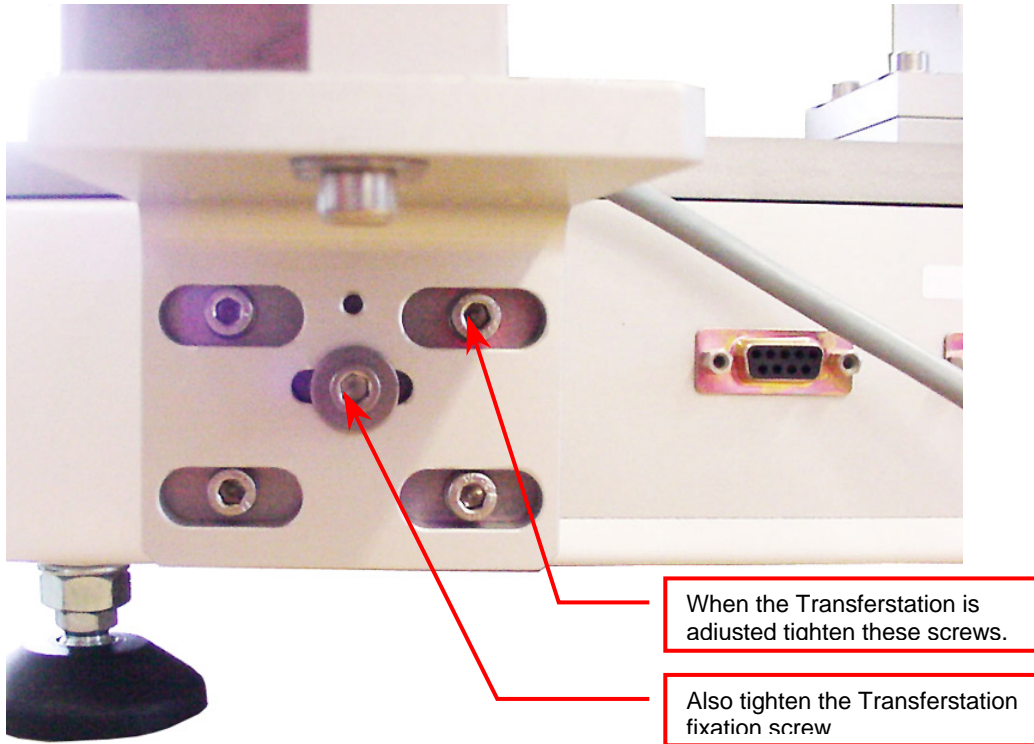






To extend the shovel the use of the STXFer-Program is recommended. For the use of the program see the STXFer document.





## 2. Mounting Kit already attached (changing Transferstation)

